



Keywords: onewireviewer, 1-wire, ibutton, 1wire, onewire, battery, java, port, 1-wire adapter

APPLICATION NOTE 5057

# OneWireViewer Tips and Tricks

By: Bernhard Linke, Principal Member Technical Staff  
 Brian Hindman, Senior Member Technical Staff, Software  
 Jun 13, 2011

*Abstract: This document gives insight into the operation of the OneWireViewer, its way of displaying errors, and function-viewer-specific peculiarities. It also includes hints on how to test for a bad iButton battery and how to verify whether a mission was started successfully. The second part of the document relates to software installation, port configuration, adapter detection, and changing adapter types and ports. This document, together with application note 4373, "OneWireViewer and iButton® Quick Start Guide," and application note 3358, "OneWireViewer User's Guide," covers all situations that the typical user of 1-Wire and iButton devices is likely to encounter.*

## Introduction

The OneWireViewer software was originally written to demonstrate the usefulness and effectiveness of the 1-Wire® application program interface (API) for Java®. The software can exercise most iButton® and 1-Wire devices through USB and serial (COM) port adapters. It is available for 32-bit and 64-bit versions of Windows® 7, Windows Server 2008, Windows Vista®, and Windows XP® (service pack 2 and greater).

Thanks to the logger iButton devices, the OneWireViewer has gained popularity with researchers. A user interface that exercises a wide variety of iButton and 1-Wire devices is less intuitive for users focused on setting up a logger and retrieving data after a couple of weeks or months. When the OneWireViewer encounters an abnormal situation, such as logger end-of-life, finding and interpreting the error messages can be a challenge. This document explains how to find and understand error messages, and how to distinguish between a device error (e.g., caused by a drained battery) and an operator error (e.g., a software password not set). It also describes how to test for a bad battery before starting a mission, verify whether a mission was started successfully, and keep track of the logger's battery energy. The second half of this document addresses software aspects, including determining the version of the OneWireViewer and the underlying 1-Wire drivers, initial software installation, software upgrade and uninstallation, as well as changing communication ports and 1-Wire adapters.

## Types of iButton and 1-Wire Devices

There are three types of 1-Wire products: iButton devices with a battery (loggers, NV SRAM memories, and real-time clocks (RTCs)), iButton devices without a battery (sensors, EPROMs, and EEPROMs), and 1-Wire chips (various functions with and without memory). All 1-Wire devices have a 64-bit ROM ID with built-in 8-bit cyclic redundancy check (CRC). The memory and/or control functions (everything besides the ROM function commands) can—but need not—implement schemes to safeguard data against communication errors. As **Table 1** shows, the vast majority of 1-Wire devices have built-in CRC support. The presence or absence of safeguards, like CRCs, affects the OneWireViewer's abilities to detect and deal with abnormal situations when communicating with 1-Wire devices.

**Table 1. 1-Wire Devices Supported by the OneWireViewer**

Device Type	Memory and/or Control Functions CRC Support	
	Yes*	No
iButtons with Built-In Battery	DS1921 series, DS1922 series, DS1923** (Loggers)	DS1904 (RTC), DS1992, DS1993, DS1995, DS1996 (Memories)
iButtons without Battery	DS1920 (8-bit CRC), DS1972, DS1973, DS1977, DS1982 (8-bit CRC), DS1985	DS1971
1-Wire Chips	DS18S20 (8-bit CRC), DS1822 (8-bit CRC), DS18B20 (8-bit CRC), DS2406, DS2408, DS2422, DS2431, DS24B33, DS2438 (8-bit CRC), DS2450, DS2502 (8-bit CRC), DS2505, DS28E04, DS28EA00 (8-bit CRC), DS28EC20	DS2413, DS2415, DS2417, DS2430A, DS2762

\*CRC-16 unless otherwise noted.

\*\*Limited support: humidity readings are not compensated for temperature nor corrected for saturation drift.

## Failure Mechanisms

Despite their solid appearance, iButton devices are not hermetically sealed. In particular, iButton loggers are often inadvertently exposed to moisture, from condensing water from the air, from rain when the device is underground, or from water when the device is submerged. As the temperature cycles, the iButton product can actually "pump in" moisture.

Once inside the iButton, water creates a conductive path that, over time, drains the battery. The chemical reaction between water and metal on the iButton circuit board leads to corrosion. This can cause a short between the data lid and GND, or break the path from the data lid to the chip and back to GND.

If connected to the 1-Wire bus,

- A device with a broken communication path does not cause any errors. The OneWireViewer will simply not find it.
- A device with an internal short does not generate errors either. It will make all other devices disappear from the OneWireViewer's device list.
- An iButton with a drained battery but without a short between the data lid and GND will cause a variety of error messages in the OneWireViewer. The error message depends largely on the presence or absence of CRC support.

## How Errors Are Displayed

The OneWireViewer has two ways of notifying users about errors. The most obvious place is at the bottom of the OneWireViewer's main window (Figure 1). The less obvious place is in the error log window (Figure 2).

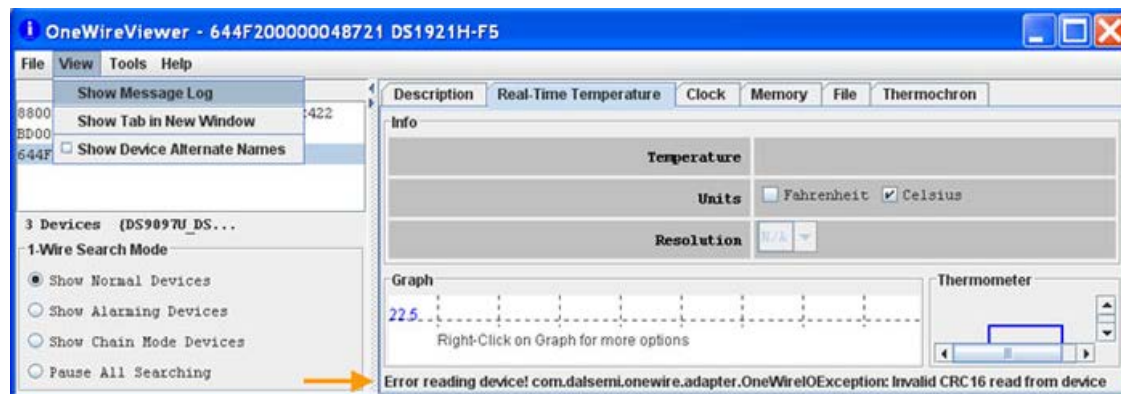


Figure 1. The most obvious place for error messages is at the bottom of the main window.



Figure 2. The same error description in the error log file.

To open the error log window, click on the **View** menu, and select **Show Message Log**, as indicated in Figure 1. Then, in the message log window, click on **Level** to verify that **Information** is check-marked.

## Typical Error Messages

When accessing devices without CRC support, the OneWireViewer verifies the success of a write operation by reading back after write. If the data read back does not match the data written, the typical error message ends with `Read back of scratchpad had incorrect data` or `Read back verify had incorrect data`. The beginning of the message explains when the error

(also referred to as the "exception") occurred.

There are two categories of devices with CRC support: those with password security (logger iButtons of the DS1922 series, DS1923, and DS1977) and those without password security (logger iButtons of the DS1921 series, other iButtons without battery, and 1-Wire chips). In either case, the OneWireViewer determines the success of a read or write operation by reading the CRC that the 1-Wire device generates during the memory/control function command flow.

For devices without password security, the error message ends with `Invalid CRC16 read from device`. The beginning of the message typically (but not always) explains when the error or exception occurred. For devices with password security, the error signaling is more complex. The message ending could be `Invalid CRC16 read from device` when accessing the unprotected scratchpad or `Invalid CRC16 read from device. Password may be incorrect when accessing other memory areas` or `Invalid CRC16 read from device. Password may be incorrect or a sample may be in progress` when accessing the data log memory of a logger iButton of the DS1922 series or the DS1923.

## Function-Viewer-Specific Error Behavior

The OneWireViewer consists of several function-specific viewers: ThermoChron, Mission, Temperature, Humidity, A to D, Switch, Clock, Memory, and File. Except for Switch, they all apply to logger iButton devices, which are very popular with nontechnical users. **Table 2** summarizes how the various function viewers cope with error situations. The ThermoChron and Mission viewers display error conditions only in the message log, a location that is easily missed by an inexperienced user.

Using password protection can have confusing consequences for the user. If passwords are enabled and the software password for a particular device is not set, the viewer cannot read the Device Configuration register. This results in both, the **Real-Time Humidity** and the **A to D** tab, being displayed. This is also the case for a DS2422 and a DS1922 or DS1923 with a drained battery.

**Table 2. Function-Viewer-Specific Behavior**

Function	Error Signaling	Special Notes
ThermoChron® (DS1921)	<a href="#">Message log only</a>	All tabs can be opened. No tab has data (the right half of the <b>Status</b> tab is empty) if the battery is drained.
Mission (DS1922, DS1923)	<a href="#">Message log only</a>	Only the <b>Status</b> tab can be opened. The right half of the <b>Status</b> tab is empty if the software password is not set or the battery is drained. See the <a href="#">Distinguishing Between an Incorrect Password and a Drained Battery</a> section to identify the reason.
Temperature	Main window, message log	The <b>Temperature</b> viewer always generates an error message if a mission is in progress.
A to D (Humidity)	Main window only	The <b>A to D (Humidity)</b> viewer always generates an error message if a mission is in progress.
Clock	Main window only	<u>Non-CRC parts</u> : an error is signaled only with <b>Synchronize Clock to PC time</b> and <b>Halt Real-Time Clock</b> . A date in February 2106 is indicative for a drained battery. <u>CRC parts</u> : an error is signaled when opening the <b>Clock</b> tab and when executing any of the functions.
Memory	Main window, message log	<u>Non-CRC parts</u> : an error is signaled only with <b>Commit Changes</b> . <u>CRC parts</u> : an error is signaled when reading a memory bank; <b>Commit Changes</b> is not executable.
File	Main window, message log	The file viewer builds on <b>Memory</b> viewer functions. Therefore, error messages explained above apply only to the elementary functions <b>Format Device</b> (all parts) and <b>Create Directory</b> (non-CRC parts).

## Distinguishing Between an Incorrect Password and a Drained Battery

Disregarding a bad electrical contact between 1-Wire adapter and iButton, an invalid CRC16 can result from the viewer not knowing the logger's password or a drained logger battery. The current OneWireViewer (version 3.15.50 and older) cannot distinguish between these two conditions. The only memory area that can be accessed without the password is the logger's 32-byte scratchpad. The test is simple: select the logger in question, open the **Memory** tab, and select memory bank **Scratchpad with CRC and Password**. In case of a good battery, the CRC16 is valid and the scratchpad contents are displayed in the viewer's main window. If the CRC is invalid, the battery is bad and no scratchpad contents is displayed. In case of a good battery, if desired, one

can overwrite one or more of the scratchpad data bytes and then click on the **Commit Changes** button. The new data will be accepted and can be verified through refresh. This is the good news. The bad news is that one now needs to find the correct passwords. After the passwords are identified, they need to be entered through the **Set Software Password** function on the **Password** tab. After this step, refresh the mission results on the **Mission** tab and all functions of the logger iButton are accessible again. Note that the OneWireViewer does not store passwords in a file; they are lost when the program is closed.

## Error Communicating with Adapter

The error situations discussed so far relate to the various function viewers and potentially malfunctioning iButton or 1-Wire devices. The connection between 1-Wire adapter and 1-Wire device was assumed to be reliable. An intermittent contact results in CRC errors or readback verification errors, as discussed above.

Another type of error can occur if the path between the computer's port and the 1-Wire adapter is not reliable. During normal communication this can result in the following error messages:

```
ERROR: ThermoChronViewer (<ROM ID>) Setup Error:  
com.dalsemi.onewire.OneWireException: 1-Wire Adapter communication exception
```

e.g., when downloading the data log of a DS1921, or

```
ERROR: OneWireViewer (null) 1-Wire exception:  
com.dalsemi.onewire.adapter.OneWireIOException: native TMEX error -12
```

while scanning the 1-Wire bus for new arrivals or departures. If such an error appears, check the cable between the computers port (COM or USB), make sure that all connections are solid, restart the OneWireViewer, and repeat the operation that was interrupted by the adapter error.

## Testing for a Bad Battery Before Starting a Mission

Especially if an iButton logger has been deployed before, it is wise to check whether it is still functioning properly. As Table 2 shows, there are several function viewers to choose from. If the logger was stored as recommended, i.e., with the real-time clock halted, the **Clock** viewer is the first choice. Select the logger to be tested on the OneWireViewer's **Device List**, open the **Clock** tab, and wait for a few seconds. Then click the **Synchronize Clock to PC Time** button. If the battery is good, there will be no error message and the difference from PC Time is zero or 1 second. If there is an error message, check whether password protection is enabled for the logger (see the [Distinguishing Between an Incorrect Password and a Drained Battery](#) section).

## Mission Start with Verification

Instructions on how to start a mission are found in application note 3358, "[OneWireViewer User's Guide](#)," sections *ThermoChron and Mission*. For the **ThermoChron** viewer, make sure that the rollover setting, sampling rate (in minutes between samples), and mission start delay (in **minutes**) are set according to your needs. Synchronizing the RTC does not make any difference if the clock has been tested before starting the mission. Setting the temperature-alarm limits may be useful; in any case, alarming situations can be identified when the temperature log is processed (see application note 3809, "[Exporting DS192x Logger Data from the OneWireViewer into Excel®](#)") after the mission is completed. The clock-alarm function does not affect the outcome of a mission and can therefore be disregarded.

For the **Mission** viewer, make sure that the rollover setting, sampling rate (in seconds between samples), and mission start delay (in **minutes**) are set according to your needs. Synchronizing the RTC does not make any difference if the clock has been tested before starting the mission. For the channels to be included in the log (always temperature, with the DS1923 also humidity if of interest), check **Enable sampling** and select the resolution. As before, setting alarm limits is optional.

After the mission parameters are selected, click **OK** and the mission should begin. If the start was successful, the lower right half of the **Status** tab (**ThermoChron** and **Mission** viewers) is filled with data similar to the screen copy in application note 3358. The same is true for the other tabs. If these fields remain empty, the mission did not start. In that case, open the message log and scroll down to the bottom to see the error message.

## How to Keep Track of the Battery Energy

The iButton logger data sheets include lifetime curves to estimate the logger lifetime depending on the temperature conditions during the mission. Due to the small memory and 8-bit resolution, the DS1921 series loggers have extremely low energy consumption. Not exceeding +50°C, they can continuously log for 5 years or more at one sample every 10 minutes. At higher temperatures, more attention is required. At +85°C, the battery lifetime is reduced to approximately 6 months, regardless of the sampling rate.

The DS1922 series of loggers and the DS1923 have a higher energy consumption, which depends on the temperature, sampling rate, and temperature resolution. A special calculator has been developed to gauge the remaining battery energy (see application

note 3761, "DS1922/DS1923 Battery Gas Gauge"). Note that the calculator is based on worst-case conditions. There may still be life in the battery even if, according to the calculator, its energy reserves are exhausted. For a critical mission, do not count on "hidden reserves."

All iButton loggers have a 24-bit nonresettable Total (Device) Samples counter, which increments whenever a measurement takes place. This counter should not be mistaken for a battery gas gauge. According to the lifetime curves in the data sheet, when used at temperatures of +50°C or lower, the DS1921G can last for 3.8 years when sampling every minute (= 2 million samples), or 5.3 years when sampling every 10 minutes (= 278,000 samples), or 5.5 years when sampling every hour (= 48,000 samples). As these numbers illustrate, the total samples count is only useful for estimating the remaining battery energy when the entire mission history is also known.

## How to Identify the Installed OneWireViewer's Version

To identify the viewer's version, start the viewer, open the **Help** menu and click on **About**. This opens a new window that displays the version of the OneWireAPI (the underlying API that the OneWireViewer calls on to read or write to 1-Wire devices), the OneWireViewer itself, and its function viewers.

## How to Identify the Installed 1-Wire Driver Version

The 1-Wire drivers are the software that establishes communication with the 1-Wire adapter. The driver version information is accessible through the **Control Panel**.

### Windows 7, Windows Server 2008, Windows Vista

Click on **start**, and then click on **Control Panel** (Figure 3), which opens as a new window containing a list of computer settings. In the section **Programs**, click on **Uninstall a program**.

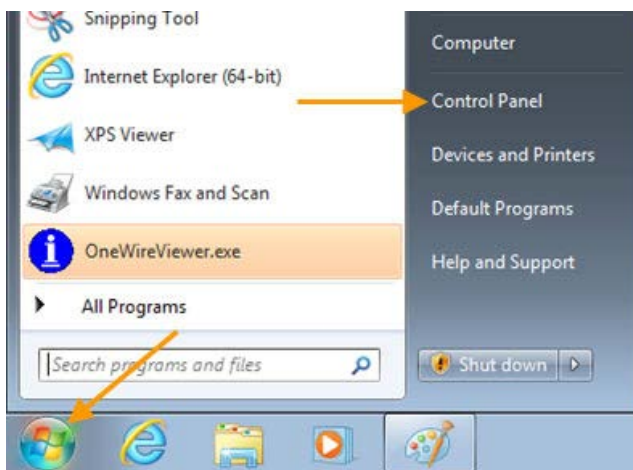


Figure 3. Accessing the Control Panel.

Typically, the installed programs are sorted by name. That puts the 1-Wire drivers, which the OneWireViewer is bundled with, automatically near the top of the list (Figure 4). The driver version is part of the program name. A code x64 at the end of the program name indicates that the 64-bit version is installed. With the 32-bit version, the code field is either missing or x86.

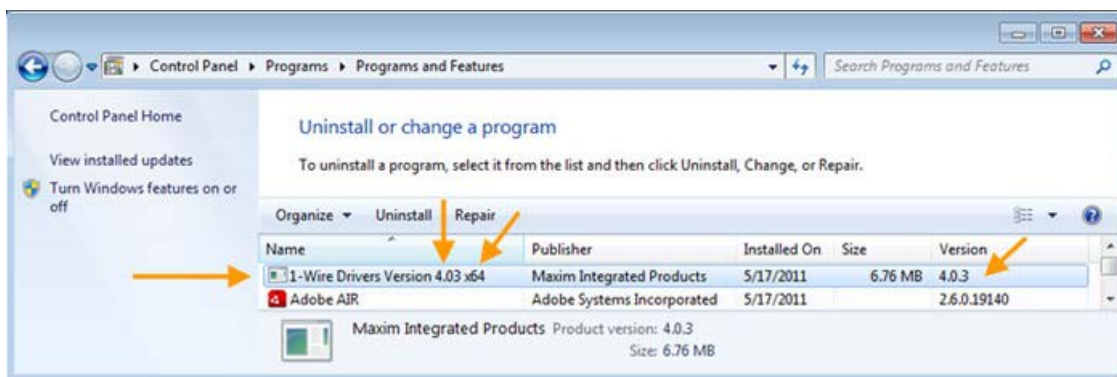




Figure 4. Identifying the driver version.

## Windows XP

Click on **start**, move the mouse cursor up to **Settings**, and then to the right to **Control Panel** (Figure 5). Then click on **Control Panel**, which opens as a new window containing a list of utility programs.

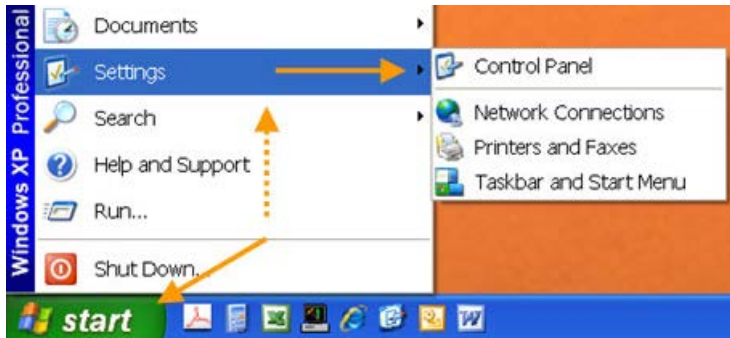


Figure 5. Accessing the Control Panel.

Look for the utility **Add or Remove Programs** and start it by double-clicking. The 1-Wire drivers are typically near the top of the list (Figure 6). The driver version is part of the program name. Since there is no x64 code at the end of the program name, the 32-bit version is installed. Clicking [Click here for support information](#) displays the publisher name and driver version number in a separate window.

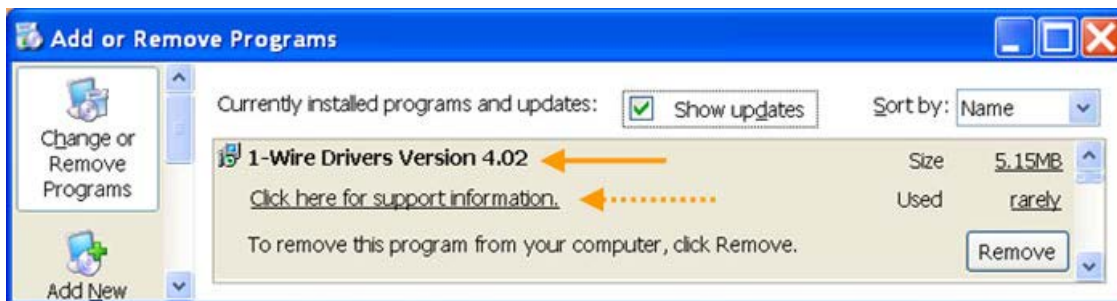


Figure 6. Identifying the driver version.

## Initial Installation Pitfalls

The OneWireViewer is available for four versions of the Windows operating system: Windows 7, Windows Server 2008, Windows Vista, and Windows XP. The name of the operating system is displayed during the startup phase after the computer is switched on.

Each of these operating systems exists as 32-bit version and as 64-bit version. The OneWireViewer requires Java version 5, update 8 or higher) to run. Many PCs, but not all, have Java software installed at the factory.

To ensure that the initial installation is successful,

- Identify whether your PC is configured as a 32-bit or 64-bit system.
- Test for Java and Java installation/upgrade.
- Download and install the correct version of the OneWireViewer and 1-Wire drivers.

## Identifying the System

To find out whether your PC is configured as a 32-bit or 64-bit system, perform the following steps:

1. Open the command prompt window:

**Windows 7, Windows Server 2008, Windows Vista**

**start** → type `cmd` in the search box and then press **Enter**.

**Windows XP**

**start** → click on **Run** → type `cmd` → click **OK**

2. Obtain the system information:

In the command prompt window, type `systeminfo` and press enter. After the entire system information is printed to the screen, scroll to the top of the window. Now look for the line that begins with `System type`. The string `x86-based PC` indicates a 32-bit system. For a 64-bit system the string is `x64-based PC`. Note what your system is and close the window.

## Testing for Java and Java Installation/Upgrade

Java software is available as 32-bit and as 64-bit version. If Java is already installed, you can identify the version in the same way as the version of the 1-Wire drivers (refer to Figures 4 and 6 and look for **Java**).

There is also an online Java test. If your PC is a 64-bit system, you must use the 64-bit version of Internet Explorer® to get a valid test result. To access the online test, open the appropriate version of the Internet Explorer and go to <http://java.com>. Click on the **Do I have Java?** link, then click on the **Verify Java version** button.

If Java is not installed or your version is older than Version 5, Update 8, click on the **Download Java Now** button to download and install the latest version. Click the **Agree and Start Free Download** button, then save the file (e.g., to the desktop in Windows XP, or to the default downloads folder in Windows 7, Windows Server 2008, or Vista). Next run (open, double-click) the downloaded file and follow the instructions on screen.

## Downloading and Installing the OneWireViewer

Refer to application note 4373, "[OneWireViewer and iButton Quick Start Guide](#)," Steps 2 and 3. At this point, you must download the version of 1-Wire Drivers that matches your operating system type (32-bit or 64-bit). In Step 3 of the Quick Start Guide, the final window of the driver installation has a **Finish** button that, when clicked, completes the installation. If you are using a USB to 1-Wire adapter, also execute Step 4 of application note 4373. After that continue with *Running the OneWireViewer for the first time*.

## Running the OneWireViewer for the First Time

### Windows 7, Windows Server 2008, Windows Vista

Click on **start** button, and then put the mouse cursor on **All Programs**. Within seconds, all installed programs are listed. Click on the **1-Wire Drivers** folder. When the folder opens (see **Figure 7**), move the cursor to **OneWireViewer.exe** and click.

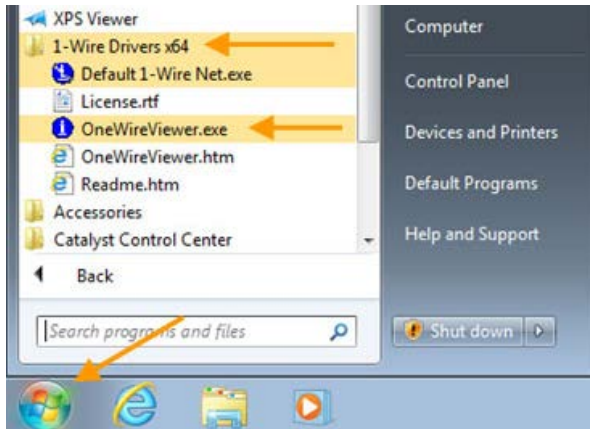


Figure 7. Initial start of the OneWireViewer.

### Windows XP

Click on the **start** button, move the mouse cursor up to **Programs**, and then to the right to the **1-Wire Drivers** folder (**Figure 8**). When the folder opens, move the cursor to **OneWireViewer.exe** and click.

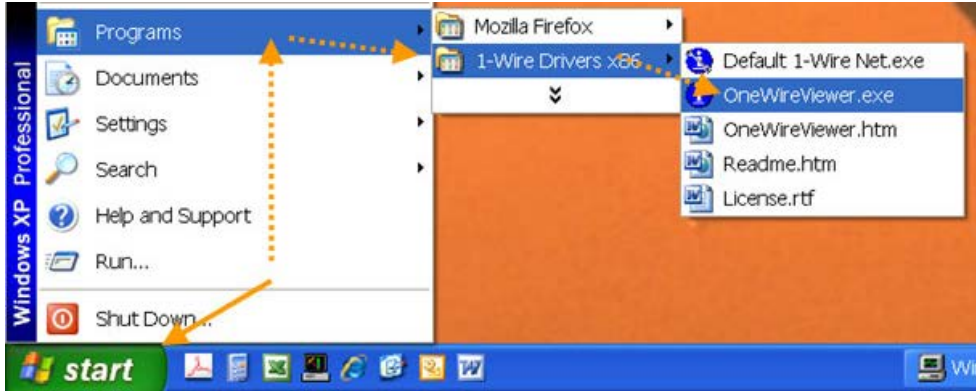


Figure 8. Initial start of the OneWireViewer.

When the OneWireViewer is run for the very first time, the onewireviewer.properties file does not exist. This launches the **1-Wire API for Java Setup Wizard**. The initial screen (see Figures 9 and 10) asks for the type of 1-Wire port adapter and the communication port. Verify that the 1-Wire adapter, such as a USB or COM port adapter is plugged into a functioning port and note the port's number, such as USB1 or COM1.



Figure 9. Java Setup Wizard, 1-Wire Port Selection showing the USB port selection.



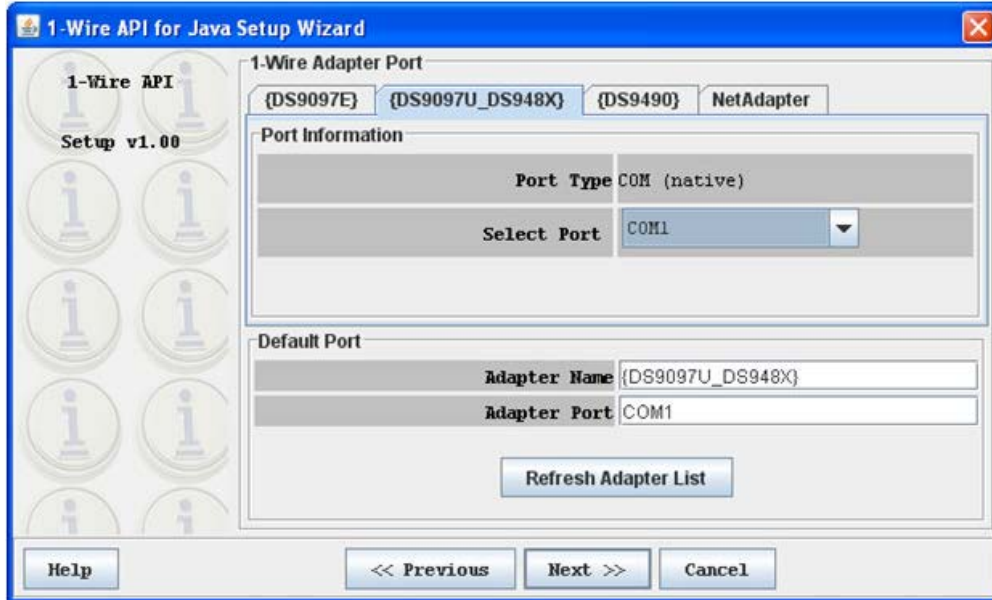


Figure 10. Java Setup Wizard, 1-Wire Port Selection showing the COM port selection.

Click the correct tab indicating the adapter of choice. For the USB adapter, click the **{DS9490}** tab if you are using a **DS9490R** or **DS9490B** adapter and select the correct port (e.g., USB1) from the **Select Port** drop-down menu. For serial port adapters, click the **{DS9097U\_DS948X}** tab if you are using the **DS9097U**, **DS1411**, or **DS948x** (USB-to-serial port) adapter and select the correct port. The software also supports passive legacy adapters, which are selected through the **{DS9097E}** tab. Then, once the correct port has been selected, click **Next**. If the port selection was successful, you will see the next screen (not shown here), where the device polling rate is selected. If instead you see an error message **1-Wire Net not available**, proceed to section [Port Selection Help](#).

The default polling rate setting of 1 second is a good choice and should be accepted. Now click on **Next**, which takes you to the next screen (not shown here), where the **1-Wire Search Mode** is selected. The default setting **Show Normal Devices** is appropriate for the initial setting and should be accepted. Now click **Finish**, which completes the setup and opens the OneWireViewer's main window (Figure 11). Now you are ready to connect 1-Wire devices to the port adapter and continue with the OneWireViewer User's guide.



Figure 11. The OneWireViewer main window.

## Port Selection Help

An unsuccessful port selection causes an error window (Figure 12) to open. In this case click on **OK** to close the window. After closing the OneWireViewer, run the **Default 1-Wire Net.exe** program, which is located in the **1-Wire Drivers** folder (see Figures 7 and 8). This opens the **Default 1-Wire Network Settings** program (Figure 13).



Figure 12. Port selection error.

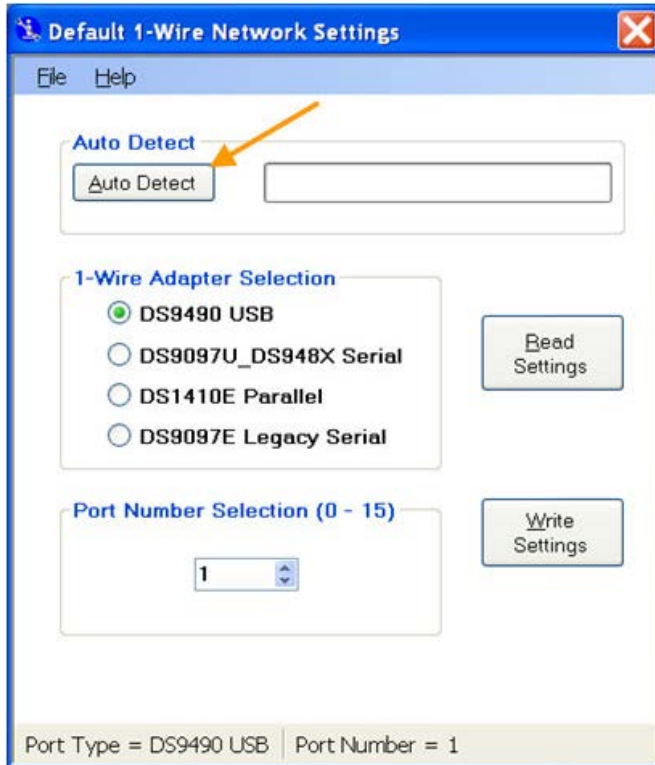


Figure 13. Port and adapter detection utility.

First, verify that a functioning 1-Wire adapter is properly plugged in. Then click the **Auto Detect** button. Within seconds, you will see a success message (Figure 14). Click **Yes**, then **OK** on the **Auto Detect** sequence finished window, and then close the detection utility.

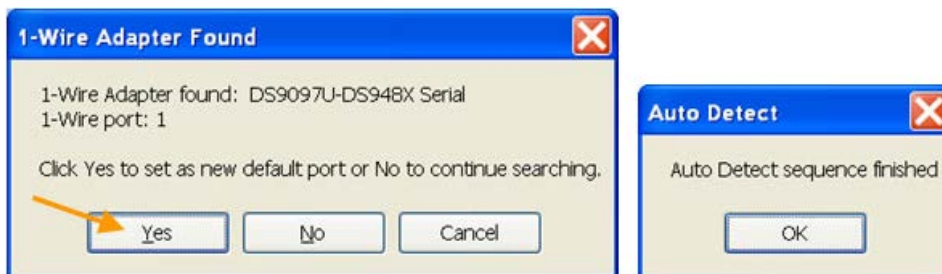


Figure 14. Auto Detect success message.

With the next start of the OneWireViewer, the just detected port and adapter information is listed in the **Default Port** field (see Figure 9 or 10). Just click on **Next** three times in a row to reach the OneWireViewer main window. The `onewireviewer.properties` file is created or updated when the OneWireViewer is closed.

## How to Change 1-Wire Adapters and Ports

If changing out USB or USB-to-serial adapters, it is safest to close the OneWireViewer, then use the built-in operating system **Safely Remove Hardware** feature to prepare the system for device removal. Once successful, then physically remove the DS9490 from the PC's USB port. Next, plug in the new adapter. If it has never been recognized by the PC in question, refer to Step 4 of [application note 4373](#) and then follow the instructions in the [Port Selection Help](#) section. Now, rerun the OneWireViewer.

If changing between adapters already present on the PC, simply click on the OneWireViewer's **Tools** menu and choose **Pick Adapter** (Figure 15). This will display a new window titled **Please pick an adapter** (Figure 16). Simply click on the corresponding adapter tab, select the port number, and click **OK**.



Figure 15. Pick Adapter menu selection.

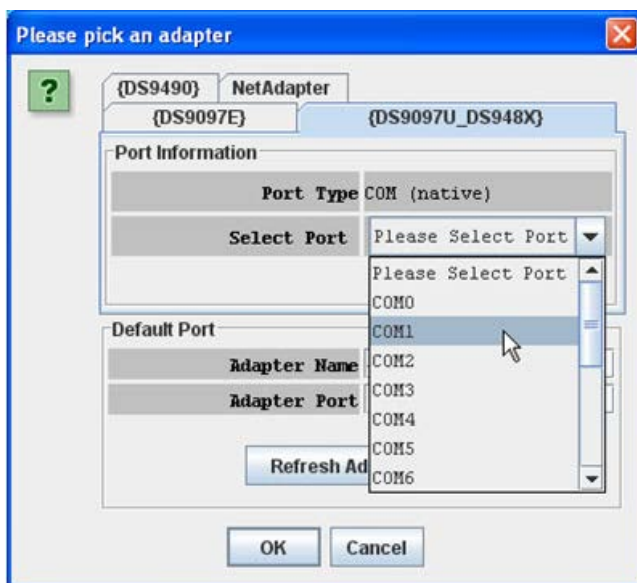


Figure 16. Please pick an adapter window showing serial port selections.

## How to Install a Newer OneWireViewer Version

Before installing a new version, the current version must be uninstalled.

### Windows 7, Windows Server 2008, Windows Vista

Click on **start**, and then click on **Control Panel** (Figure 3), which opens as a new window containing a list of computer settings. In the section **Programs**, click **Uninstall a program**. The 1-Wire drivers, which the OneWireViewer is bundled with, are usually found near the top of the list (Figure 17).

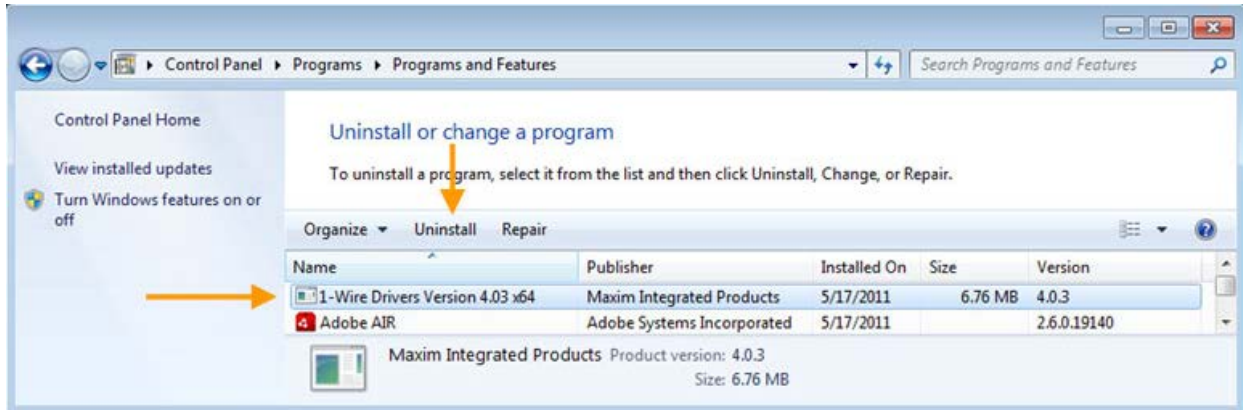


Figure 17. Uninstalling the OneWireViewer and 1-Wire Drivers.

To uninstall, click on **1-Wire Drivers** and then on **Uninstall**. A prompt will appear where you need to confirm the intention to uninstall.

## Windows XP

Click on **start**, move the mouse cursor up to **Settings** and then to the right to **Control Panel** (Figure 5). Then click on **Control Panel**, which opens as a new window containing a list of utility programs. On the **Control Panel**, look for **Add or Remove Programs** and start it, e.g., by double-clicking. The 1-Wire drivers, which the OneWireViewer is bundled with, are usually found near the top of the list (Figure 18). To uninstall, click on **Remove**. A prompt will appear where you need to confirm the intention to uninstall.

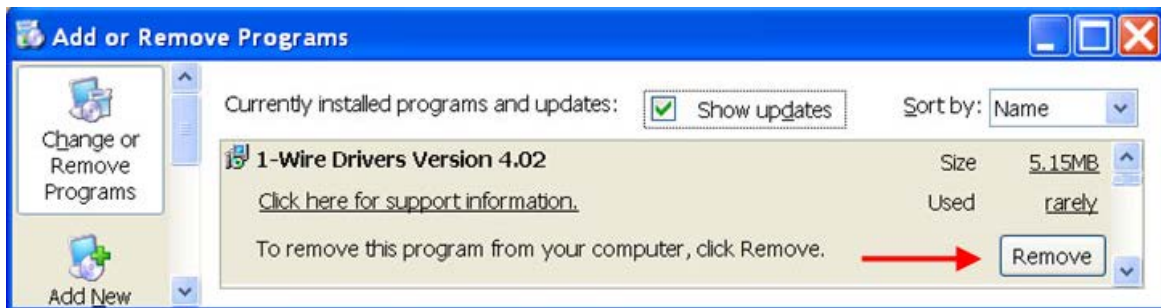


Figure 18. Uninstalling the OneWireViewer and 1-Wire drivers.

Regardless of the operating system, there is one important file, named `onewireviewer.properties`, which is not automatically removed. With Windows 7, Windows Server 2008, and Windows Vista, the file is typically located in folder

```
C:\Users\\.OneWireViewer\
```

With Windows XP, the file is typically found in folder

```
C:\Documents and Settings\\.OneWireViewer\
```

This file contains the state of the OneWireViewer, such as window sizes, menu options, and the 1-Wire adapter being used. Unless the new viewer version is supposed to use the current settings, the properties file must be deleted, using an application like Windows Explorer. This ensures that the **1-Wire API for Java Setup Wizard** will be launched when the new version is started for the first time. Now continue with the instructions in the [Downloading and Installing the OneWireViewer](#) section.

## Summary

The OneWireViewer is a convenient tool to work with iButton loggers and to evaluate 1-Wire devices. Due to the nature of the software, its user interface may be less intuitive for the inexperienced or infrequent user. This document gives more insight into the operation of the OneWireViewer, its way of displaying errors, and function-viewer-specific peculiarities. It also includes hints on how to test for a bad iButton battery and how to verify whether a mission was started successfully. The second part of this document relates to software installation, port configuration, adapter detection, and changing adapter types and ports. This document, together with application note 4373, "[OneWireViewer and iButton Quick Start Guide](#)," and application note 3358, "[OneWireViewer User's Guide](#)," covers all situations that the typical user of 1-Wire devices is likely to encounter.

1-Wire is a registered trademark of Maxim Integrated Products, Inc.  
iButton is a registered trademark of Maxim Integrated Products, Inc.  
Excel is a registered trademark of Microsoft Corporation.  
Internet Explorer is a registered trademark of Microsoft Corporation.  
Java is a registered trademark and registered service mark of Oracle and/or its affiliates.  
Thermochron is a registered trademark of Maxim Integrated Products, Inc.  
Windows is a registered trademark and registered service mark of Microsoft Corporation.  
Windows Vista is a registered trademark and registered service mark of Microsoft Corporation.  
Windows XP is a registered trademark and registered service mark of Microsoft Corporation.

#### Related Parts

<a href="#">DS1921G</a>	Thermochron iButton
<a href="#">DS1922L</a>	Temperature Logger iButton with 8KB Datalog Memory
<a href="#">DS1922T</a>	Temperature Logger iButton with 8KB Datalog Memory
<a href="#">DS28E04-100</a>	4096-Bit Addressable 1-Wire EEPROM with PIO

#### More Information

For Technical Support: <http://www.maximintegrated.com/support>  
For Samples: <http://www.maximintegrated.com/samples>  
Other Questions and Comments: <http://www.maximintegrated.com/contact>

Application Note 5057: <http://www.maximintegrated.com/an5057>  
APPLICATION NOTE 5057, AN5057, AN 5057, APP5057, Appnote5057, Appnote 5057  
Copyright © by Maxim Integrated Products  
Additional Legal Notices: <http://www.maximintegrated.com/legal>